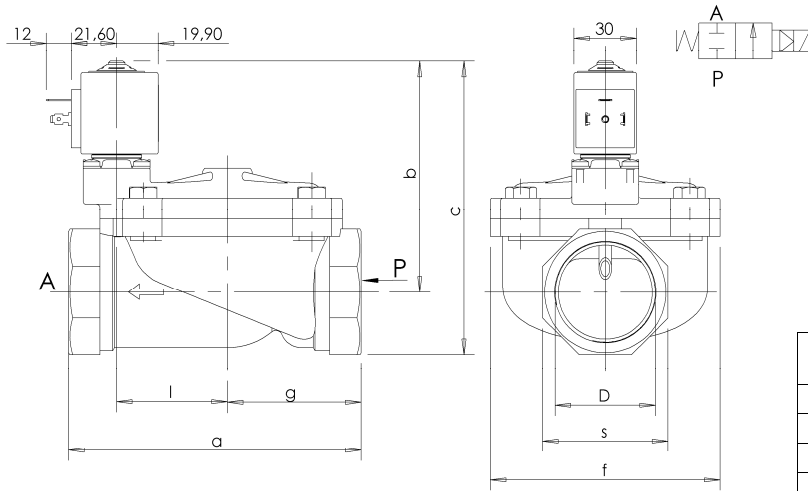




**SOLENOID VALVE**  
**2/2 - NC (Normally closed)**  
 Pilot operated  
**G1 ¼ ÷ 2**

**L180**  
 G 1" ¼ ÷ 2"



Without manual override								With manual override	
D	a	b	c	f	g	l	s	b	c
G 1 ¼	113	107	133	81	50	40	52	130	156
G 1 ½	140	110	140	110	60	53	60	133	163
G 2	157	115	151	110	72	53	72	138	174

► **GENERAL FEATURES**

Diaphragm valve, pilot operated, having full orifice.  
 Suitable to shut off liquid and gaseous fluids (verify the compatibility of fluid with materials in contact).  
 Not suitable for use with dangerous fluids listed in Group 1, therefore they are free from CE marking in conformity with article 3 § 3 of the European Directive 97/23/EC (Pressure Equipment Directive).

► **TECHNICAL FEATURES**

*Maximum allowable pressure (PS)* 15 bar  
*Opening time* from ~300ms to ~1500ms  
*Closing time* from ~1000ms to ~2000ms  
*Fluid temperature* -10°C +90°C (NBR)  
 0°C +130°C (FPM)  
*Max viscosity* 5°E (~37 cStokes or mm<sup>2</sup>/s)

► **MATERIALS IN CONTACT WITH FLUID**

*Body* Brass  
*Sealing* Diaphragm: NBR or FPM / Actuator: FPM  
*Internal components* Brass and stainless steel  
*Seat* Brass  
*Guide assembly* Stainless steel  
*Shading ring* Copper

► **COIL**

*Continuous duty* ED 100%  
*Encapsulation material* PET (polyethylene terephthalate) fiberglass reinforced  
*Coil insulation class* F (155°C) on request class H (180°C) - UL  
*Ambient temperature* -10°C +50°C  
*Electric connections* DIN 46340 - 3 poles connectors (EN175301-803)  
*Protection degree* IP 65 (EN 60529) with plug connector  
*Voltages DC* 12-24V (+10% -5%)  
 24V/50Hz - 110V/50Hz (120V/60Hz) - 230V/50Hz (+10% -15%)  
 (Other voltages and frequencies on request).

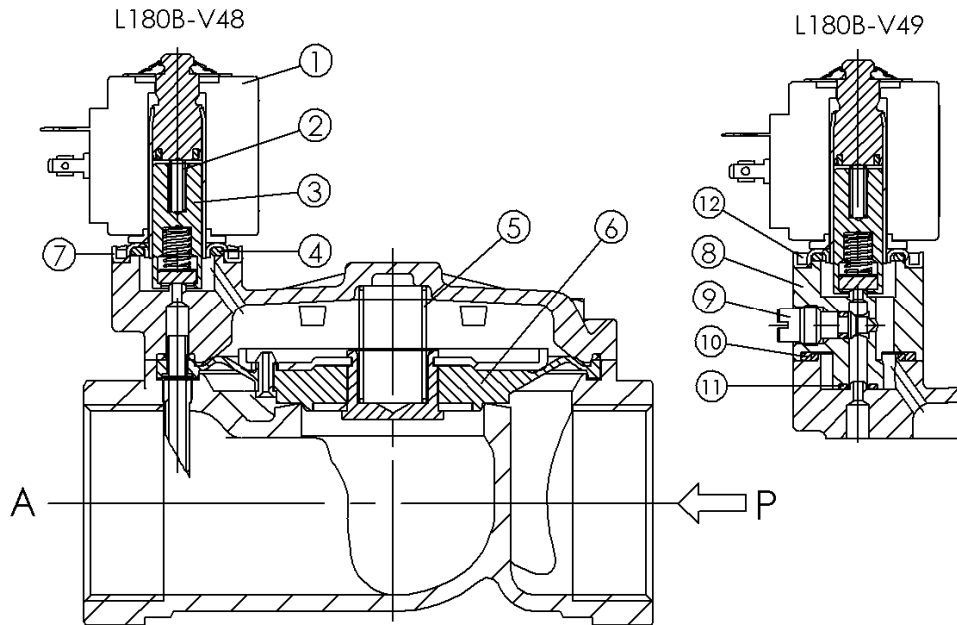
Port size ISO 228	Orifice size. (mm)	Differential pressure (bar)				Kv (m <sup>3</sup> /h)	Series and type			Power absorption			Sealings	Notes	Weight (kg)
		Δp min	Δp max		Valve		Valve with manual override	Coil	AC (VA)		DC (W)				
			Gases	Liquids					Inrush	Holding					
			AC	DC	AC	DC									
G 1 ¼	30	0,50	10	10	10	10	L180B48	L180B49	ZA30A	23	14	9	NBR (diaphragm) FPM (actuator)	1	1,640
G 1 ½	45														2,600
G 2	45														3,020
G 1 ¼	30														1,640
G 1 ½	45														2,600
G 2	45														3,020

► **NOTES**

- Sealings : NBR = Nitrile-butylene elastomer FPM = Fluoro-carbon elastomer  
 - Operation with gaseous fluids at high pressure without any outlet restriction can reduce the diaphragm life.  
 1 - L180B49 and L180V49: weight increased of 0,180Kg.

# L180 G 1" ¼ ÷ 2"

## ► SPARE PARTS



Kit description	Kit P.N.	Consisting of:
Core kit	G3108702	Core pos. 3 Core return spring pos. 2 OR guide assembly pos. 4
Core return spring kit	G3111101	N.10 core return spring pos. 2
Spring on diaphragm kit	G 1 ¼ G2401101 G 1 ½ - 2 G2401501	N.10 spring on diaphragm pos. 5
OR guide assembly kit	L180B.. GU2421000053 L180V.. GU2424000053	N.10 OR guide assembly pos. 4
Diaphragm kit	G 1 ¼ L180B.. 2400801R G 1 ½ - 2 L180B.. 2401301R G 1 ¼ L180V.. 2400802R G 1 ½ - 2 L180V.. 2401302R	Diaphragm assembly pos. 6
Manual override group	G3108802	Body pos.8 Pin group pos. 9 Intermediate OR pos. 10 Lower OR pos. 11 N.4 fixing screw pos. 12
Guide assembly	3092201R	Guide assembly pos. 7
Coil	ZA30A	Coil pos. 1

## ► MOUNTING

Solenoid valve can be mounted in any position; vertical with coil upwards preferred.

THE VALIDITY OF REPORTED DATA IS REFERRED TO THE DATE OF ISSUE. POSSIBLE UPDATES ARE AVAILABLE ON REQUEST.